

Exchange Back-up and Restore

Back-up Online, Back-up and Restore from Exchange.

Server Versie 6, UK Manual 01-07-2011





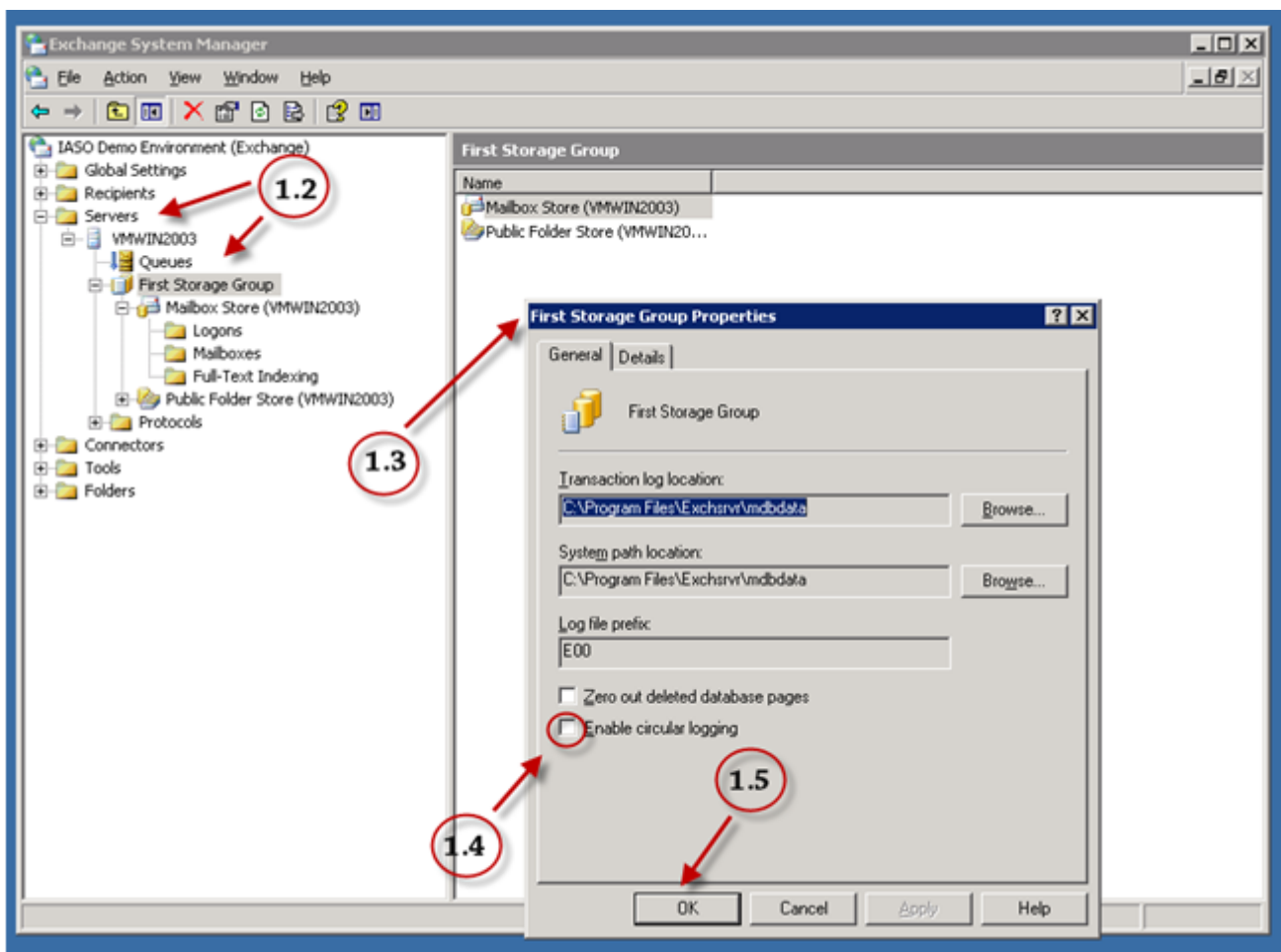
Inhoudsopgave

1	Exchange 2003	3
1.1	Prepare system for backup	3
1.2	2. Services availability:	4
1.3	3. vssadmin list writers:.....	4
1.4	4. Check if bases are mounted:	5
1.5	Exchange Backup.....	5
2	Exchange Restore	6
3	Exchange 2007	7
3.1	Prepare system for back-up.....	7
3.2	2. Services availability:	8
3.3	4. Check if bases are mounted:	9
3.4	Exchange Backup.....	10
3.5	Exchange Restore	10
4	Exchange 2010.....	12
4.1	Prepare system for backup.....	12
4.2	Exchange Backup.....	13
4.3	Exchange Restore	14

1 Exchange 2003

1.1 Prepare system for backup

1. Switch off circular logging:
 - 1.1. Start the Exchange System Manager.
 - 1.2. In the console tree, expand **Servers** → **VMWIN2003** → **<Storage Group Name>**.
 - 1.3. Right-click the storage group to disable circular logging, and then click **Properties**. The **<Storage Group Name>** Properties dialog box appears.
 - 1.4. Clear the 'Enable circular logging' check box if it is selected. Do nothing if it's clear.
 - 1.5. Click **OK**.

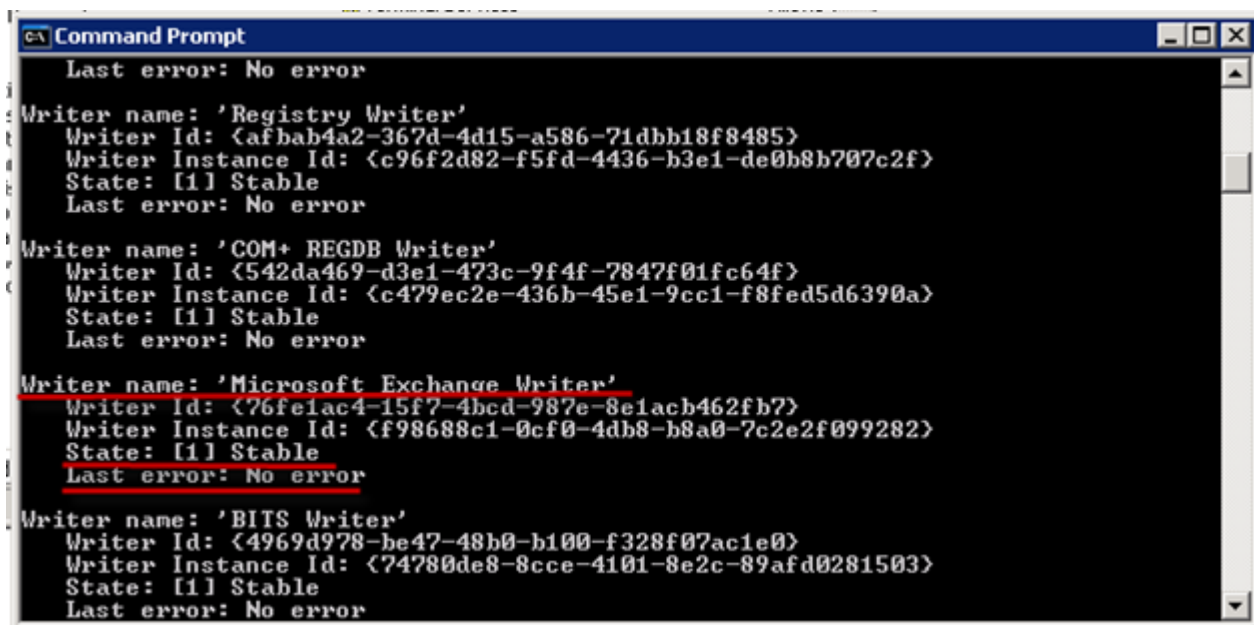


1.2 2. Services availability:

- 2.1. Go to **Start** → **Run**, enter **services.msc**, click **OK**.
- 2.2. Check if service **Microsoft Exchange Information Store** is enabled. If no start it.
- 2.3. Check if service **Volume Shadow Copy** is enabled. If no start it.

1.3 3. vssadmin list writers:

- 3.1. Go to **Start** → **Run**, enter **cmd**, click **OK**.
- 3.2. Write string **vssadmin list writers** and click **Enter**.
- 3.3. Wait while the list will be ready, find and check if State is stable and Last error – no error for **Microsoft Exchange Writer**.



```
Command Prompt
Last error: No error
Writer name: 'Registry Writer'
  Writer Id: {afbab4a2-367d-4d15-a586-71dbb18f8485}
  Writer Instance Id: {c96f2d82-f5fd-4436-b3e1-de0b8b707c2f}
  State: [1] Stable
  Last error: No error
Writer name: 'COM+ REGDB Writer'
  Writer Id: {542da469-d3e1-473c-9f4f-7847f01fc64f}
  Writer Instance Id: {c479ec2e-436b-45e1-9cc1-f8fed5d6390a}
  State: [1] Stable
  Last error: No error
Writer name: 'Microsoft Exchange Writer'
  Writer Id: {76felac4-15f7-4bcd-987e-8e1acb462fb7}
  Writer Instance Id: {f98688c1-0cf0-4db8-b8a0-7c2e2f099282}
  State: [1] Stable
  Last error: No error
Writer name: 'BITS Writer'
  Writer Id: {4969d978-be47-48b0-b100-f328f07ac1e0}
  Writer Instance Id: {74780de8-8cce-4101-8e2c-89afd0281503}
  State: [1] Stable
  Last error: No error
```

1.4 4. Check if bases are mounted:

- 4.1. Go to the Exchange System Manager (p.1).
- 4.2. In the console tree, expand **Servers** → **VMWIN2003** → **<Storage Group Name>**.
- 4.3. Check if the status of Databases from this group is mounted (right-click each database and view 'Properties'; if you see "Dismount Store", then it is mounted).

If all these paragraphs are ready you can start Exchange backup.

1.5 Exchange Backup

5. Download and Setup Server Back-up Online 2011 from www.kpn.com/downloadbackuponline.
6. Go to **My Computer** → **Backup** and select **Exchange Stores** plugin.
7. Select **<Storage Group Name>** for backup and start backup.
8. Check if backup is completed without errors in **Reports**.

Note!!!

Temporarily error: /Exchange server/First Storage Group/Logs/E00.log
The system cannot find the file specified. If it appears, it's OK.

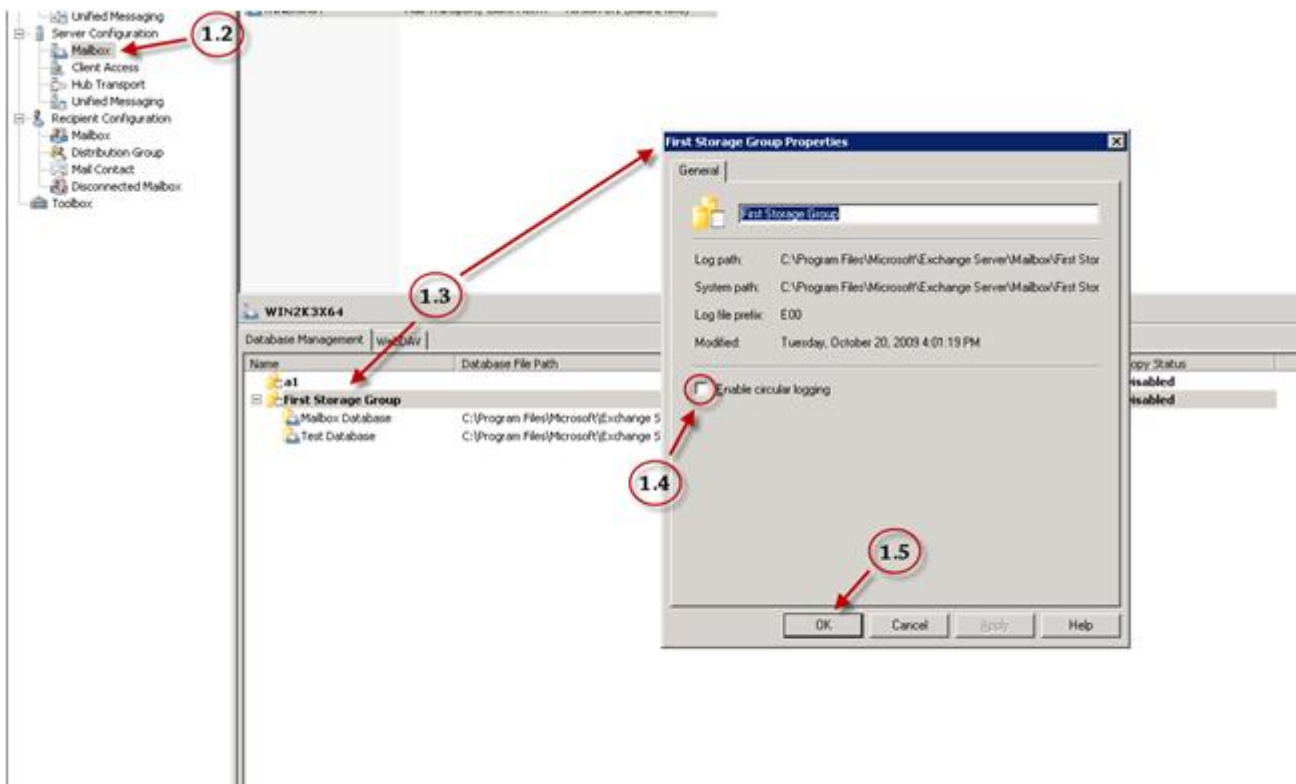
2 Exchange Restore

9. Restore Exchange to any location.
10. Check in **Reports** if Exchange restore is successful.
11. Dismount database:
 - 11.1. Go to the Exchange System Manager (p.1).
 - 11.2. In the console tree, expand
Servers → **VMWIN2003** → **<Storage Group Name>**.
 - 11.3. Change the status of Databases from this group to dismounted with the right-click.
12. Go to database file path (e.g. *C:\Program Files\Microsoft\Exchange Server\Mailbox\First Storage Group*) and copy it to any temporary location.
13. Copy the original database to any temporary location.
14. Copy the content of the restored data to database file path.
 - 14.1. Go to the Exchange System Manager (p.1).
 - 14.2. In the console tree, expand
Servers → **VMWIN2003** → **<Storage Group Name>**.
 - 14.3. Change the status of Databases from this group to Mounted with the right-click. If it is successful then backup and restore processes are successful.

3 Exchange 2007

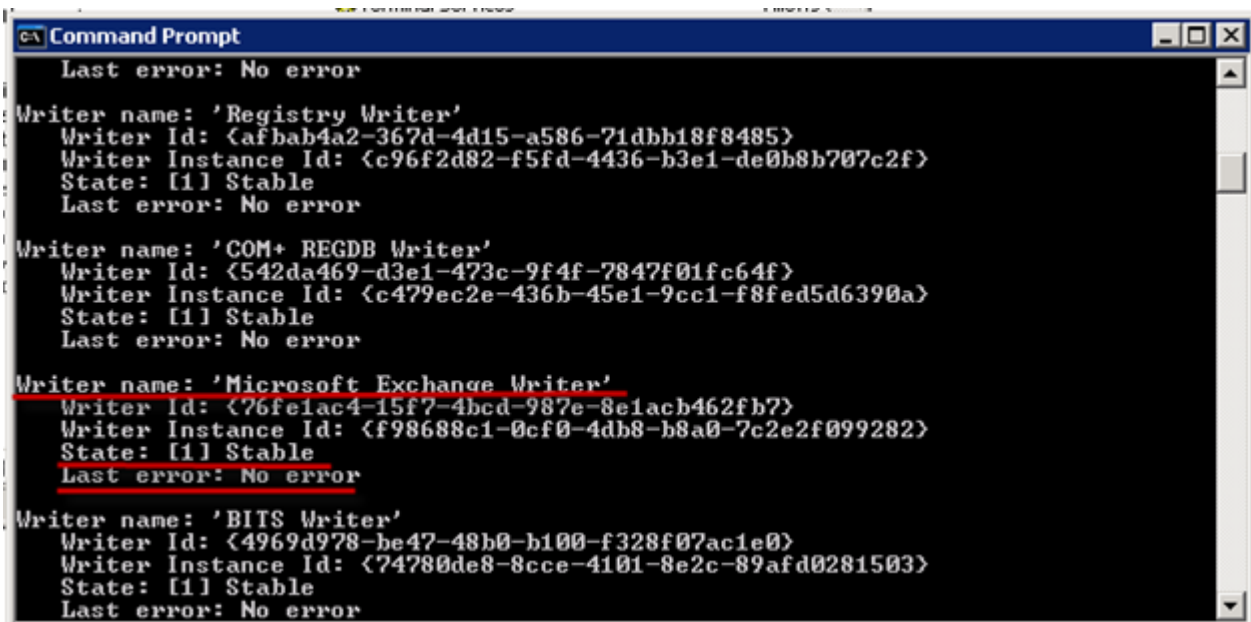
3.1 Prepare system for back-up

1. Switch off circular logging:
 - 1.1. Start the Exchange Management Console.
 - 1.2. In the console tree, expand **Server Configuration**, and then click **Mailbox**.
 - 1.3. In the work pane, right-click the storage group for which you want to disable circular logging, and then click **Properties**. The **<Storage Group Name> Properties** dialog box appears.
 - 1.4. Clear the Enable circular logging check box if it is selected. Do nothing if it's clear.
 - 1.5. Click **OK**.



3.2 2. Services availability:

- 2.1. Go to **Start** → **Run**, enter **services.msc**, click **OK**.
- 2.2. Check if service **Microsoft Exchange Information Store** is enabled. If no, start it.
- 2.3. Check if service **Volume Shadow Copy** is enabled. If no, start it.
3. vssadmin list writers:
 - .1. Go to **Start** → **Run**, enter **cmd**, click **OK**.
 - 3.2. Write string **vssadmin list writers** and click **Enter**.
 - 3.3. Wait while the list will be ready, find and check if State is stable and Last error – no error for **Microsoft Exchange Writer**.



```
CA Command Prompt
Last error: No error

Writer name: 'Registry Writer'
Writer Id: {afbab4a2-367d-4d15-a586-71dbb18f8485}
Writer Instance Id: {c96f2d82-f5fd-4436-b3e1-de0b8b707c2f}
State: [1] Stable
Last error: No error

Writer name: 'COM+ REGDB Writer'
Writer Id: {542da469-d3e1-473c-9f4f-7847f01fc64f}
Writer Instance Id: {c479ec2e-436b-45e1-9cc1-f8fed5d6390a}
State: [1] Stable
Last error: No error

Writer name: 'Microsoft Exchange Writer'
Writer Id: {76felac4-15f7-4bcd-987e-8e1acb462fb7}
Writer Instance Id: {f98688c1-0cf0-4db8-b8a0-7c2e2f099282}
State: [1] Stable
Last error: No error

Writer name: 'BITS Writer'
Writer Id: {4969d978-be47-48b0-b100-f328f07ac1e0}
Writer Instance Id: {74780de8-8cce-4101-8e2c-89afd0281503}
State: [1] Stable
Last error: No error
```


3.3 4. Check if bases are mounted:

- 4.1. Go to the Exchange Management Console (p.1).
- 4.2. In the console tree, expand **Server Configuration**, and then click **Mailbox**.
- 4.3. In the work pane find <**Storage Group Name**>.
- 4.4. Check if the status of Databases from this group is mounted.

If all these paragraphs are ready you can start Exchange backup.

3.4 Exchange Backup

5. Download and Setup Server Back-up Online from www.kpn.com/downloadbackuponline.
6. Go to **My Computer** → **Backup** and select **Exchange Stores** plugin.
7. Select **<Storage Group Name>** for backup and start backup.
8. Check if backup is completed without errors in Reports.

Note!!! Temporarily error: **/Exchange server/First Storage Group/Logs/E00.log** The system cannot find the file specified. If it appears, it's OK.

3.5 Exchange Restore

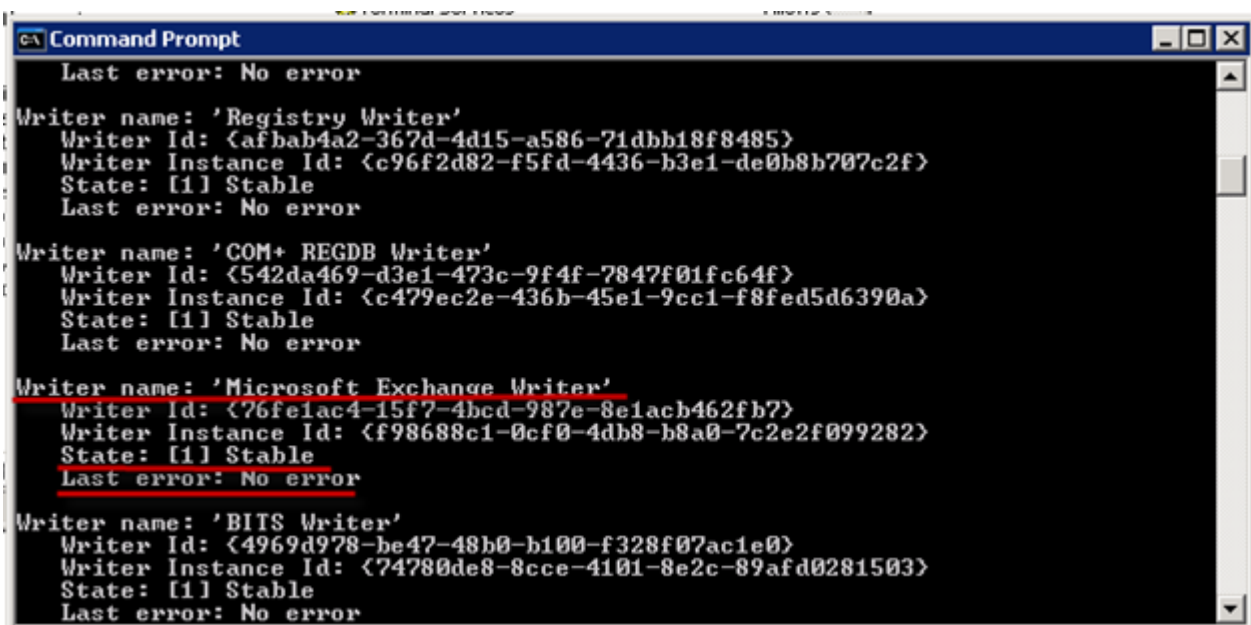
9. Restore Exchange to any location.
10. Check in **Reports** if Exchange restore is successful.
11. Dismount database:
 - 11.1. Go to the Exchange Management Console (p 1).
 - 11.2. In the console tree, expand **Server Configuration**, and then click **Mailbox**.
 - 11.3. In the work pane find **<Storage Group Name>**.
 - 11.4. Change the status of Databases from this group to Dismounted with the right-click.
12. Go to the database file path (e.g. *C:\Program Files\Microsoft\Exchange Server\Mailbox\First Storage Group*) and copy it to any temporary location.

13. Copy the original database to any temporary location.
14. Copy the content of the restored data to the database file path.
 - 14.1. Go to the Exchange Management Console (p.1).
 - 14.2. In the console tree, expand **Server Configuration**, and then click **Mailbox**.
 - 14.3. In the work pane find **<Storage Group Name>**.
 - 14.4. Change the status of Databases from this group to Mounted with the right-click. If it is successful then backup and restore processes are successful.

4 Exchange 2010

4.1 Prepare system for backup

1. Services availability:
 - 1.1. Go to **Start** → **Run**, enter **services.msc**, click **OK**.
 - 1.2. Check if service **Microsoft Exchange Information Store** is enabled. If no start it.
 - 1.3. Check if service **Volume Shadow Copy** is enabled. If no start it.
2. vssadmin list writers:
 - 2.1. Go to **Start** → **Run**, enter **cmd**, click **OK**.
 - 2.2. Write string **vssadmin list writers** and click **Enter**.
 - 2.3. Wait while the list will be ready, find and check if State is stable and Last error – no error for **Microsoft Exchange Writer**.



```
Command Prompt
Last error: No error
Writer name: 'Registry Writer'
  Writer Id: {afbab4a2-367d-4d15-a586-71dbb18f8485}
  Writer Instance Id: {c96f2d82-f5fd-4436-b3e1-de0b8b707c2f}
  State: [1] Stable
  Last error: No error
Writer name: 'COM+ REGDB Writer'
  Writer Id: {542da469-d3e1-473c-9f4f-7847f01fc64f}
  Writer Instance Id: {c479ec2e-436b-45e1-9cc1-f8fed5d6390a}
  State: [1] Stable
  Last error: No error
Writer name: 'Microsoft Exchange Writer'
  Writer Id: {76fe1ac4-15f7-4bcd-987e-8e1acb462fb7}
  Writer Instance Id: {f98688c1-0cf0-4db8-b8a0-7c2e2f099282}
  State: [1] Stable
  Last error: No error
Writer name: 'BITS Writer'
  Writer Id: {4969d978-be47-48b0-b100-f328f07ac1e0}
  Writer Instance Id: {74780de8-8cce-4101-8e2c-89afd0281503}
  State: [1] Stable
  Last error: No error
```

3. Check if bases are mounted:
 - 3.1. Start the **Exchange Management Console**.
 - 3.2. In the console tree, expand **Server Configuration**, and then click **Mailbox**.
 - 3.3. In the work pane check if the status of Databases from this group is mounted.

If all these paragraphs are ready you can start Exchange backup.

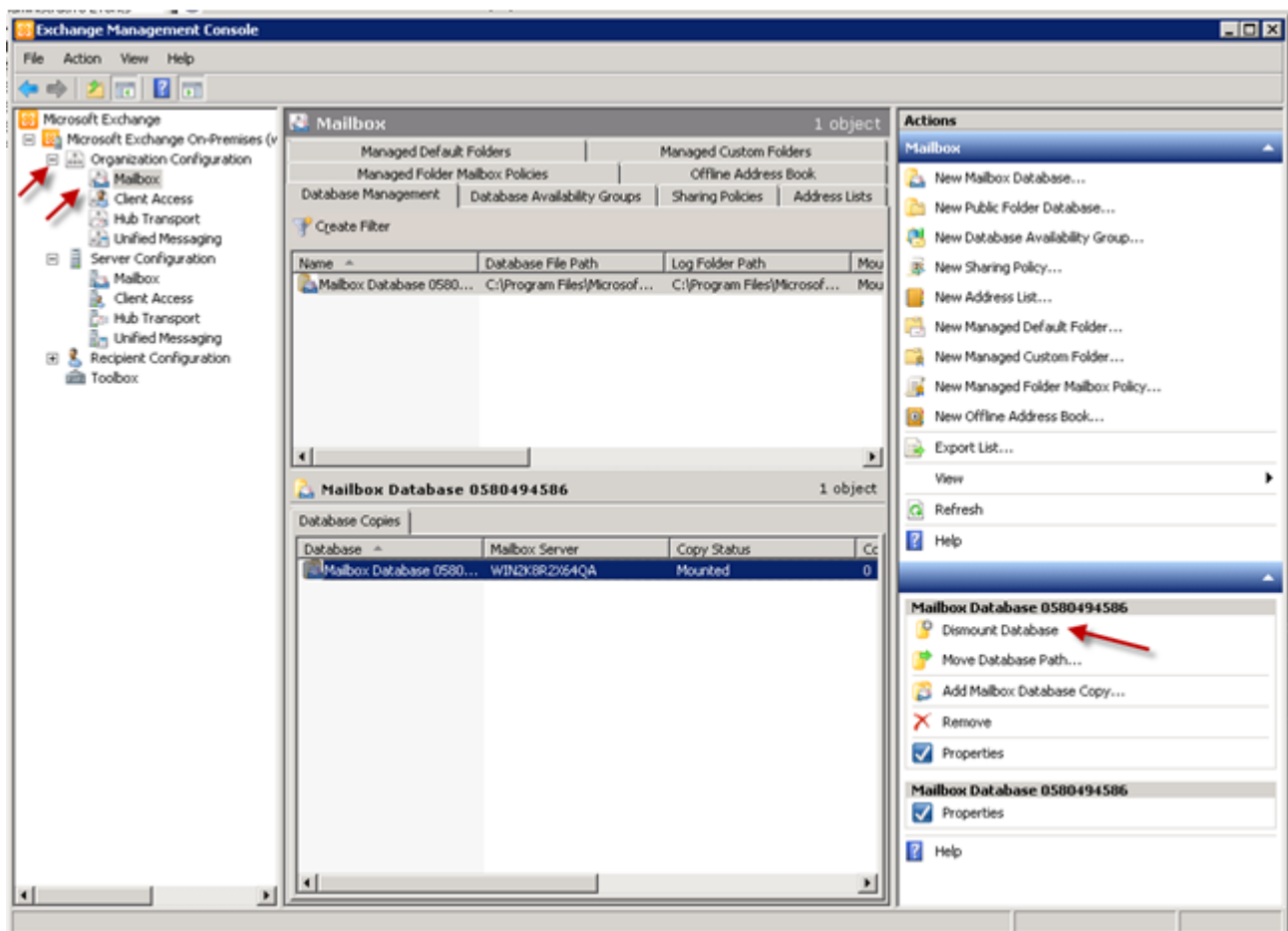
4.2 Exchange Backup

4. Download and Setup IASO2011 from www.kpn.com/downloadbackuponline.
5. Go to **My Computer** → **Backup** and select **Exchange Stores** plugin.
6. Select <**Storage Group Name**> for backup and start backup.
7. Check if backup is completed without errors in **Reports**.

Note!!! Temporarily error: /Exchange server/First Storage Group/Logs/E00.log The system cannot find the file specified.
If it appears, it's OK.

4.3 Exchange Restore

8. Restore Exchange to any location.
9. Check in **Reports** if Exchange restore is successful.
10. Dismount database:
 - 10.1. Go to the Exchange Management Console (p 3.1).
 - 10.2. In the console tree, expand **Server Configuration**, and then click **Mailbox**.
 - 10.3. In the work pane change the status of Databases from this group to Dismounted.



11. Go to the database file path (e.g. *C:\Program Files\Microsoft\Exchange Server\Mailbox\First Storage Group*) and copy it to any temporary location.
12. Copy original database to any temporary location.
13. Copy the content of the restored data to the database file path.
 - 13.1. Go to the Exchange Management Console (p.3.1).
 - 13.2. In the console tree, expand **Server Configuration**, and then click **Mailbox**.
 - 13.3. In the work pane change the status of Databases from this group to Mounted. If it's successful then backup and restore processes are successful.