

Installatie tarieventabel

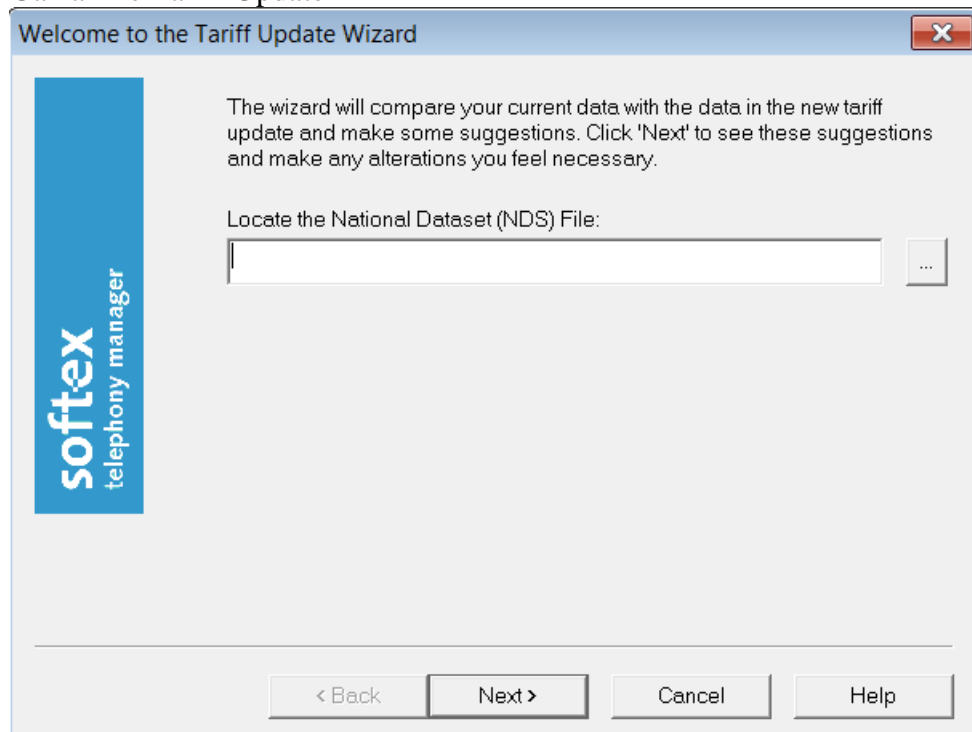
Ringmaster 4. en 5.**

Voorbeeld KPN BelBasis.

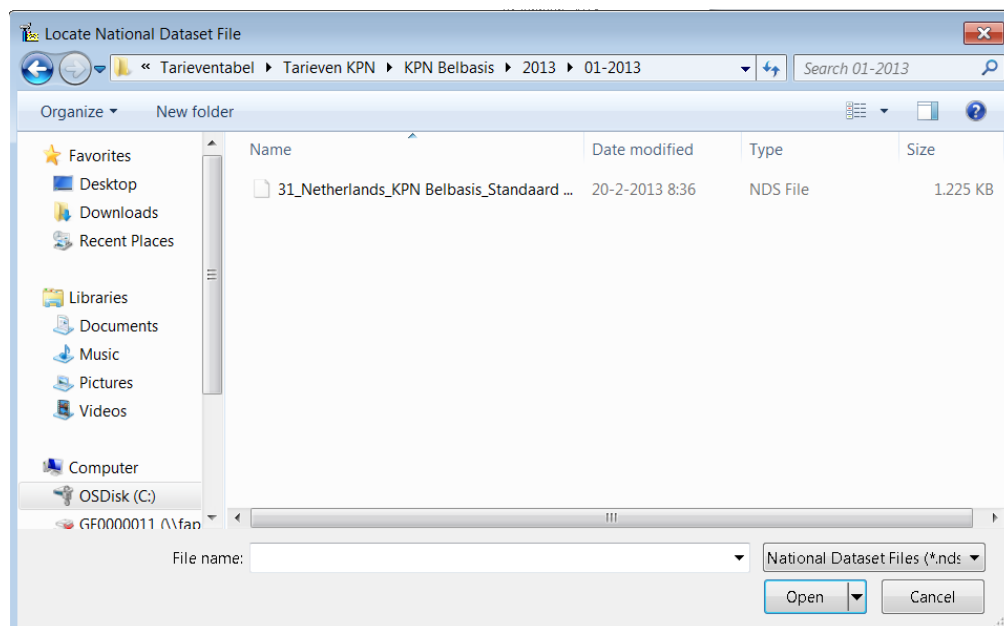
Sluit Call Charger af. Vanaf versie 5.2 stop je ook de Call Charger Service  **Soft-ex Call Processing** .

Open de Administration Module en log in met **admin merville**.

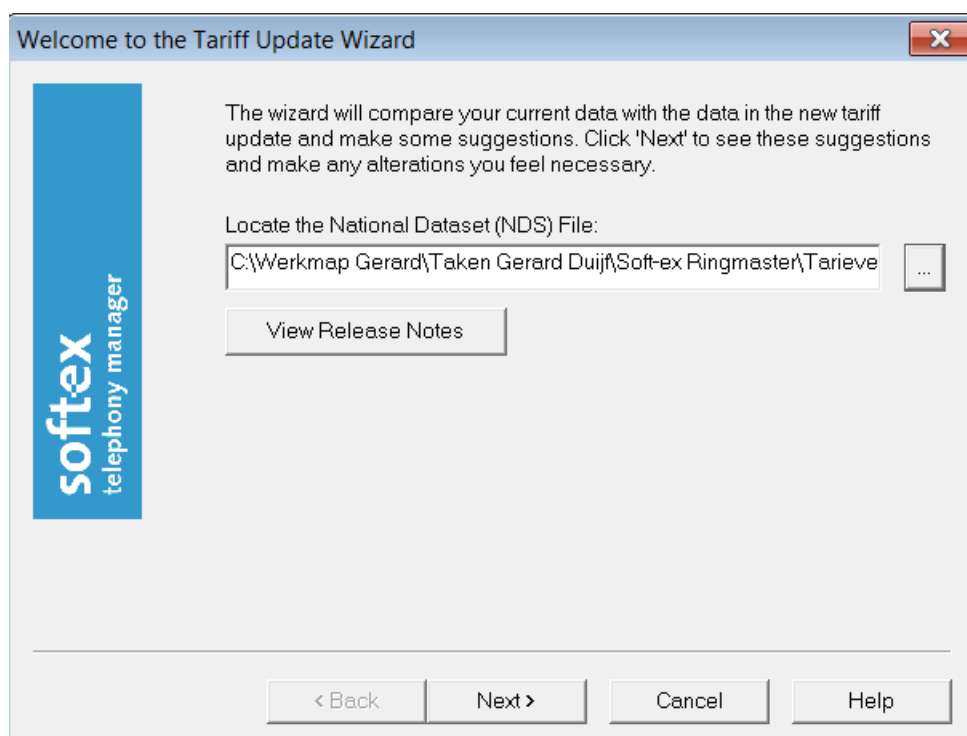
Ga na File Tariff Update



Druk op de knop naast het venster en zoek het opgeslagen NDS bestand.
Selecteer het juiste NDS bestand.



We gebruiken in dit voorbeeld BelBasis Standaard



Druk op volgende.

Zet instelling zoals in onderstaande 2 afbeeldingen.

Tariff Update Wizard - Step 2 of 3

softex
telephony manager

Carriers in this update:

! KPN Belbasis will be used to update BelBasis Standaard

Update options for KPN Belbasis

☐ Add as a new carrier

☒ Use this carrier to update:

BelBasis Standaard

☒ Keep the existing carrier name

☐ Do not import this carrier

Advanced...

< Back Next > Cancel Help

Druk op volgende.

Tariff Update Wizard - Step 3 of 3

softex
telephony manager

Prefix tables in this update:

! 31_0900 will be used to update 31_0900

! 31_Mobiel will be used to update 31_Mobiel

! 31_Lokaal will be used to update 31_Lokaal

! 31_Internationaal will be used to update 31_Internationaal

Update options for 31_0900

☐ Add as a new prefix table

☒ Use this prefix table to update:

31_0900

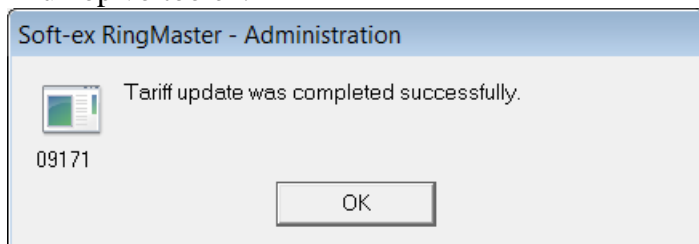
☒ Keep the existing prefix table name

☐ Do not import this prefix table

Perform a Test Tariff Update

< Back Finish Cancel Help

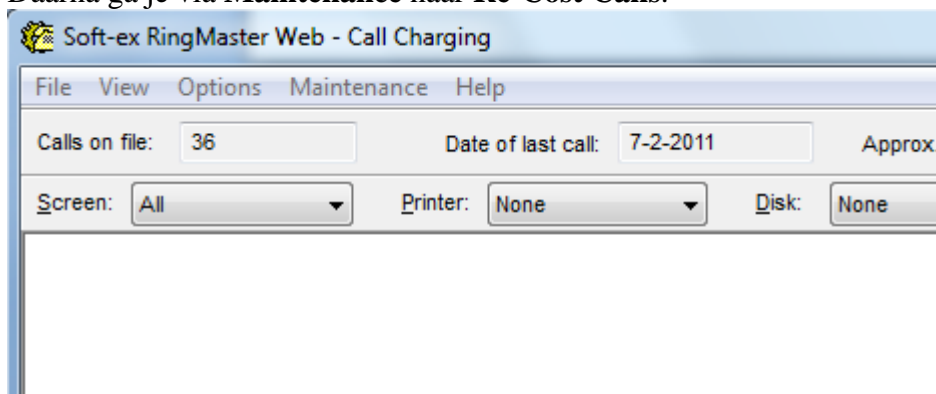
Druk op voltooiën.

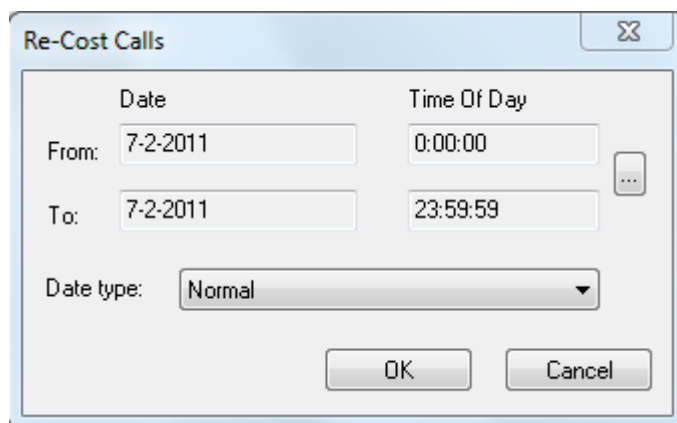


Start nu de Call Charger weer maar start de gespreksverwerking niet.

Via **File** inloggen met de bekende naam en paswoord.

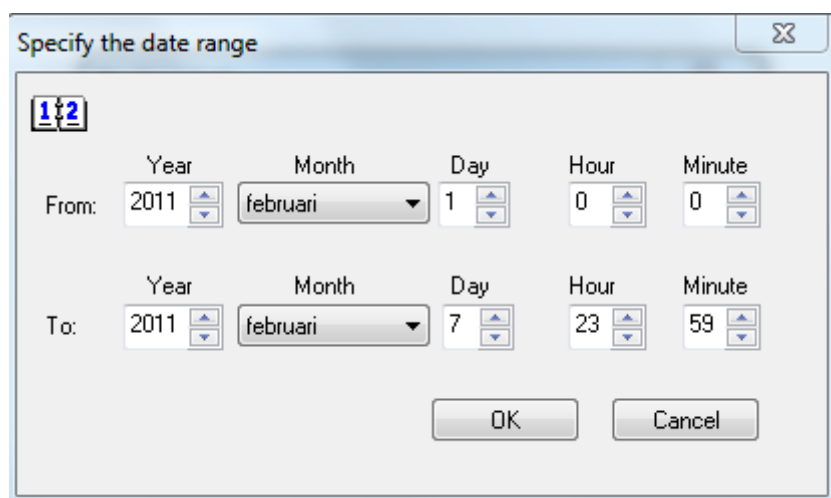
Daarna ga je via **Maintenance** naar **Re-Cost Calls**.






The 'Re-Cost Calls' dialog box has a title bar with a close button. It contains two columns: 'Date' and 'Time Of Day'. Under 'Date', there are 'From:' and 'To:' labels with text boxes containing '7-2-2011'. Under 'Time Of Day', there are text boxes containing '0:00:00' and '23:59:59'. A small button with three dots is between the 'To:' date box and the '23:59:59' time box. Below these is a 'Date type:' label and a dropdown menu showing 'Normal'. At the bottom are 'OK' and 'Cancel' buttons.

Je kunt nu de periode selecteren wanneer de nieuwe tarieven zijn ingegaan.



The 'Specify the date range' dialog box has a title bar with a close button. It features a '1 2' icon in the top left. The 'From:' section has fields for Year (2011), Month (februari), Day (1), Hour (0), and Minute (0). The 'To:' section has fields for Year (2011), Month (februari), Day (7), Hour (23), and Minute (59). All fields are interactive with up/down arrows. At the bottom are 'OK' and 'Cancel' buttons.

Daarna een paar keer OK indrukken en de tarieven worden aangepast.
Als dit is gedaan kan via File de Call Charging weer worden gestart.
Vanaf versie 5.2 hoef je alleen de Call Charger Service weer te starten.

 Soft-ex Call Processing



gerard.duijf@kpn.com