

# Ultra-Compact HSUPA USB Modem

## Blistering speeds with dazzling looks



- Super fast: Downloads up to 14.4\* Mbps, uploads up to 5.76Mbps
- Compact and lightweight
- Future proof through easy internet upgrades
- Access anywhere in Europe
- Zero-CD® for iCON® 505 and uCAN®\*\* for iCON® 505M



## NOTICE

The information in this User Guide is subject to change without notice. The contents herein are provided "as is". Except as required by applicable law, no warranties of any kind, either express or implied, including, but not limited to, the implied warranties of merchantability and fitness for a particular purpose, are made in relation to the accuracy, reliability or contents of this document.

## COPYRIGHT

Reproduction, transfer, distribution or storage of part or all of the contents in this User Guide in any form is prohibited without the prior written permission of Option® nv.

## TRADEMARK

Copyright 2009 ©. Option nv. All rights reserved. Option, GlobeTrotter, Zero-CD and the Option logo are registered trademarks of Option. All third-party trademarks are the property of their respective owners.

\* Cat10 (14.4 Mbps) DPA is planned for availability on units shipped as from Q4 2009. Until that time the device will be available as cat9 (10.2 Mbps) DPA.

\*\*sold separately

## CONTENTS

1	WELCOME	4
2	FEATURES	5
3	SYSTEM REQUIREMENTS	6
4	ICON® 505/505M PACKAGE CONTENT	6
5	INSTALLING AND SETTING UP YOUR ICON® 505/505M	7
6	USING YOUR ICON® 505/505M	12
7	LED STATUS INDICATOR	14
8	SAFE REMOVAL	15
9	TROUBLESHOOTING	16
10	DETAILED TECHNICAL SPECIFICATIONS	17
11	PRODUCT SUPPORT AND ADDITIONAL HELP	18
11.1	Technical Support	18
11.2	Help	18

# 1 WELCOME

The new ICON® 505/505M from Option® offers the latest available technology in the world market.

Combining ultra-compact and stylish design the ICON® 505/505M delivers blisteringly fast internet on the go. With download speeds of up to 14.4Mbps\* and upload speeds of up to 5.76Mbps, it can easily transfer large files or handle high-quality streaming media at speeds that match or exceed those found in many homes and offices.

Compatible with almost all popular computers, the ICON® 505/505M is ideal for those with an active mobile lifestyle, offering excellent reliability and ease-of-use.

The styling is exceptional too – with a sleek matt black body and complemented by an elegant cross-hatched finish, the ICON® 505/505M embodies an understated air of sophistication.

Ultra-compact and lightweight, super fast and good looking – the ICON® 505/505M really does have it all.

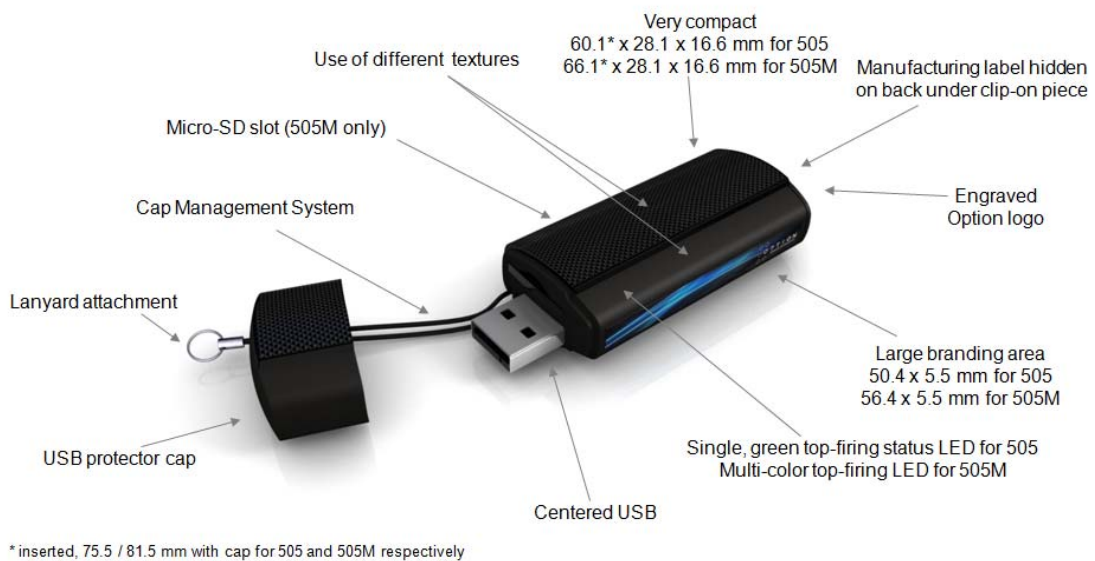
\* Cat10 (14.4 Mbps) DPA is planned for availability on units shipped as from Q4 2009. Until that time the device will be available as cat9 (10.2 Mbps) DPA.

## 2 FEATURES

The CON® 505/505M is specifically designed to be the smallest size and give the highest performance at lowest cost for entry-level and consumer markets. Its key features are:

- Ultra-compact HSUPA USB modem: blistering speeds with dazzling looks
- Dual-band high-speed 3G anywhere in Europe and quad-band 2G support for worldwide operation
- Super fast: downloads up to 14.4Mbps\*, uploads up to 5.76Mbps
- CON® 505: Compact and lightweight: just 6cm long (inserted) and 29g
- CON® 505M: Compact and lightweight: just 6.6cm long (inserted) and 33g
- Future proof via easy internet upgrades
- Comprehensively tested on infrastructures and networks worldwide
- Future proof through upgradeable firmware
- Easy connection to any PC and the internet: insert the device, install the Zero-CD® Software, go online
- CON® 505: Zero-CD® Plug 'n' Play technology supported by 118MB of internal memory
- CON 505M: Zero-CD® Plug 'n' Play technology supported by 118MB of internal memory. Also features a micro-SD slot enabling uCAN\*\*\* in conjunction with an added micro-SD card\*\*\*

### CON® 505/505M - Key Design Elements



\*Cat10 (14.4 Mbps) DPA is planned for availability on units shipped as from Q4 2009. Until that time the device will be available as cat9 (10.2 Mbps) DPA.

\*\* sold separately

\*\*\* a micro-SD card is not part of the standard product

### 3 SYSTEM REQUIREMENTS

- Windows® XP (Pro and Home), Windows Vista® 32/64bit, Mac OS® X and Linux
- Free USB port
- 10Mb of free hard disk space
- SIM-card from your local operator

### 4 ICON® 505/505M PACKAGE CONTENT

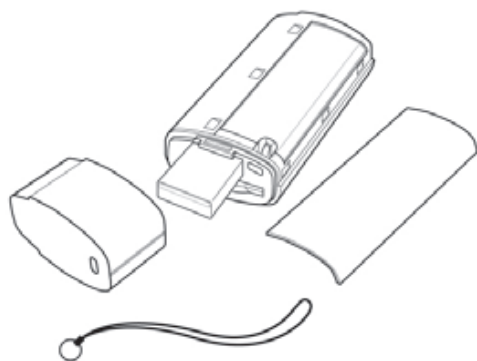
- ICON® 505/505M HSUPA USB Stick
- Quick Start Guide

In some cases the package may contain a SIM card and / or a micro-SD card supplied by your Mobile Operator.

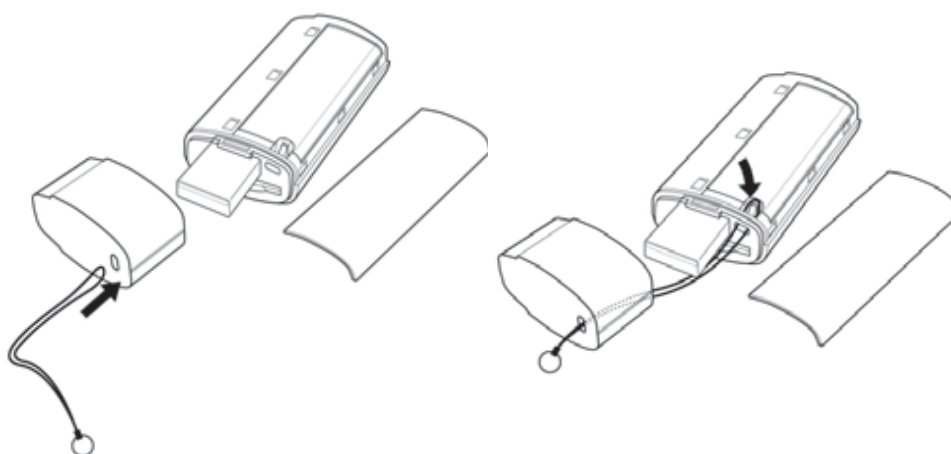
## 5 INSTALLING AND SETTING UP YOUR iCON® 505/505M

### Step 1: Attaching the Cap Management System (CMS) string

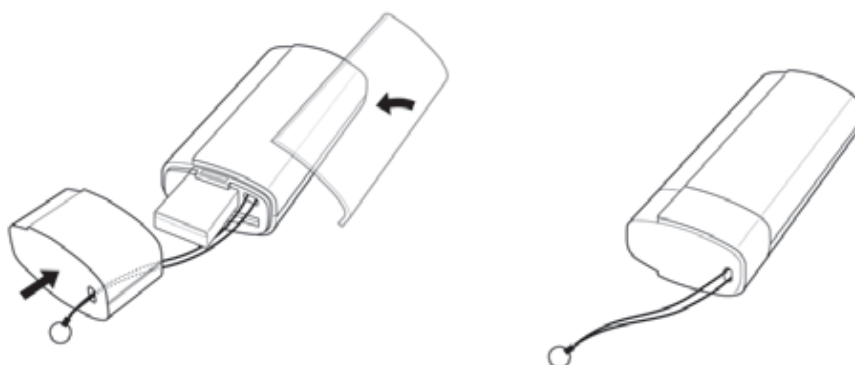
Ensure you have all parts shown below. Note: some of these are located on the underside of the paper tray in which the iCON® 505/505M sits.



First, thread the string through the opening in the cap and then through the opening in the main body. Then pull slightly on the string to ensure it anchors onto the main body's hooking mechanism.



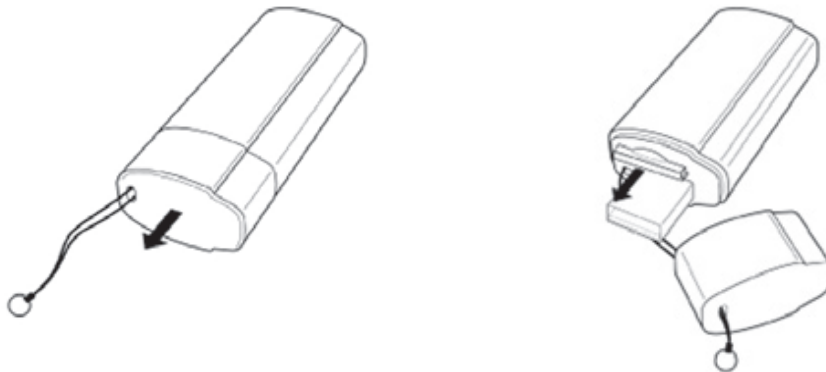
Click-on the plastic housing part to fix the CMS in place and, optionally, click the cap back on to the main body. The CMS is now installed and the iCON® 505/505M should look as shown.





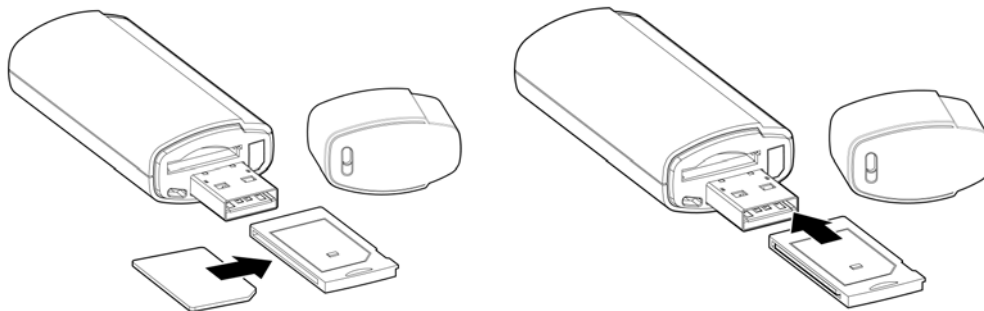
## Step 2: Inserting the SIM

Remove the cap as shown and remove the SIM tray.

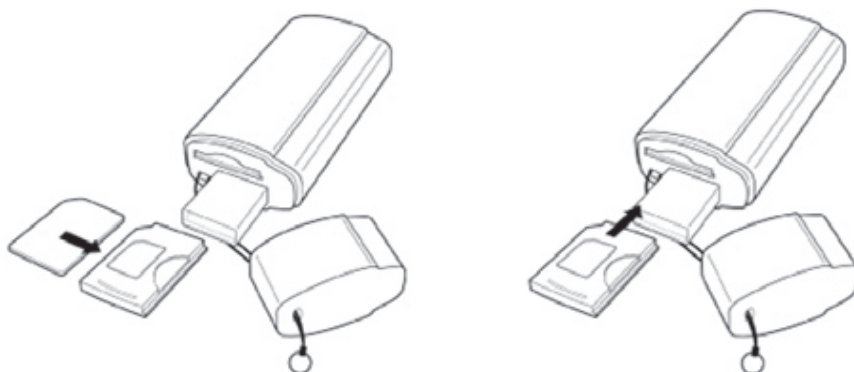


Insert the SIM in the tray as shown and then re-insert the SIM tray firmly into the iCON® 505/505M.

For iCON® 505:

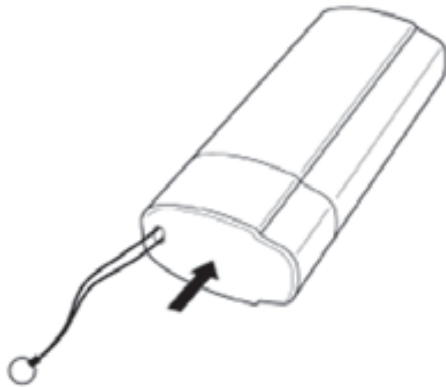


For iCON® 505M:



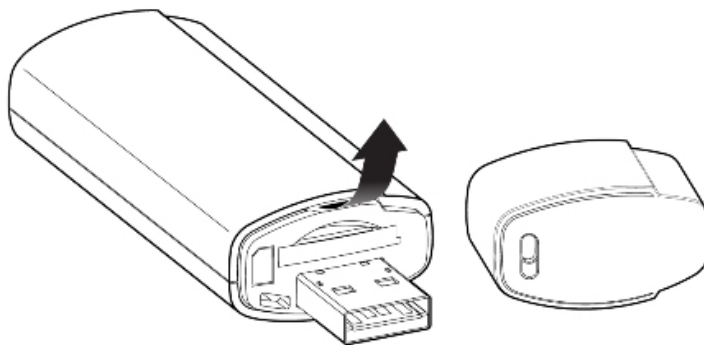


Click on the cap as needed. The device should now look as shown.

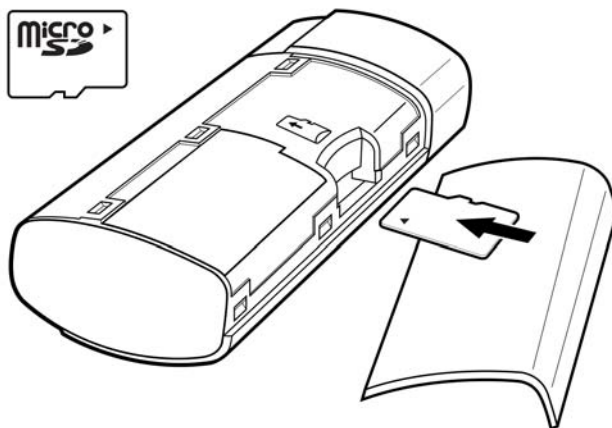


**Step 3: Inserting a micro-SD card\*\*\* (only applicable to ICON® 505M)**

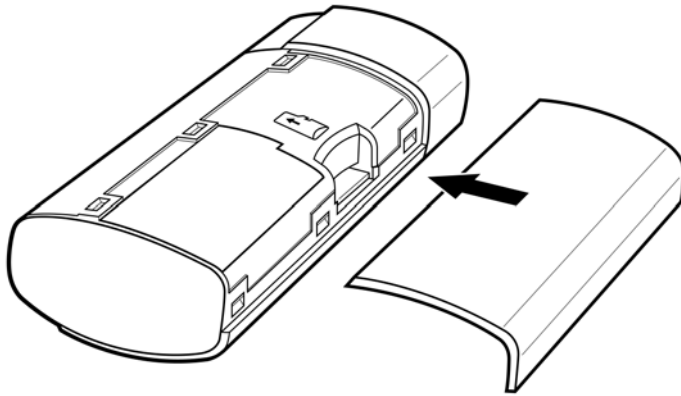
Remove the top cover from the main body



Insert the micro-SD card as shown



Click the top cover back on



\*\*\* a micro-SD card is not part of the standard product

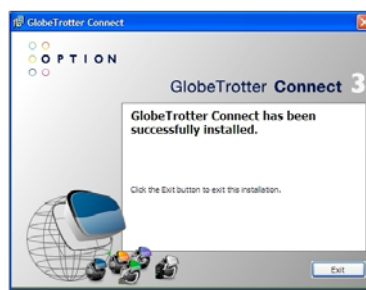
**Step 4** – Start-up your computer and insert the iCON® 505/505M into a USB slot on your computer.

**NOTE!** Your iCON® 505/505M includes the unique Zero-CD® feature from Option®. By inserting the device into your PC, the software and driver installation will start automatically.



For Windows®:

An installer window will open. Simply click "Next" and follow the installation instructions. When the "Installation Completed" screen appears, click "Exit" and you are ready to connect to the internet.



For Mac OS®:

A Finder window will open. Simply click on the GlobeTrotter Connect.pkg and follow the installation instructions. Once you have completed all steps, a "Successful Installation" screen will appear.



GlobeTrotter Connect.pkg

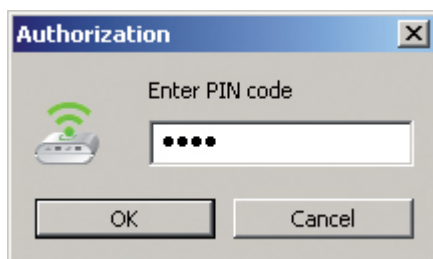
## 6 USING YOUR iCON® 505/505M

**Step 1** – Start up your computer. Insert the USB connector of the iCON® 505/505M into a free USB slot (or use an extension cable for desktop use).

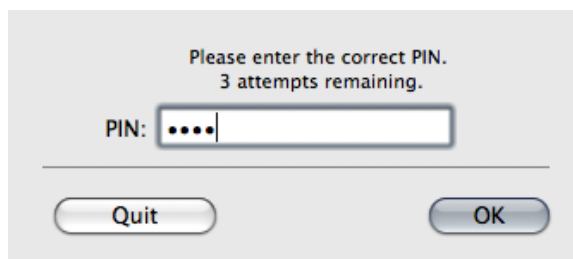


**Step 2** – Enter your SIM PIN code (not necessary if you have disabled the PIN code on your SIM card).

Windows® OS



Mac OS®



**Step 3** – Connecting

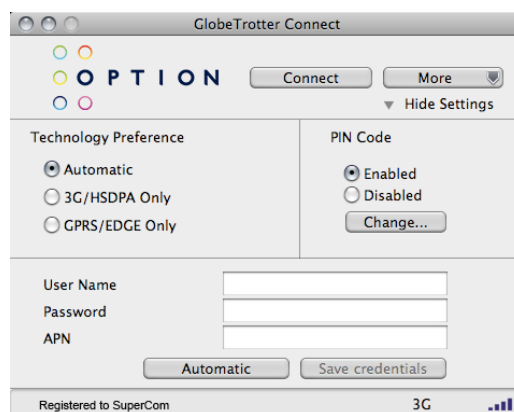
Windows® OS

You are now ready to connect to the internet by using the GlobeTrotter® Connect application in the system tool tray. Simply double-click on it to open the application fully, and then click "Connect".



Mac OS®

Open the "Application" folder and run "GlobeTrotter Connect". In this tool, click the "Connect" button.



Disconnecting can be done in the same way.

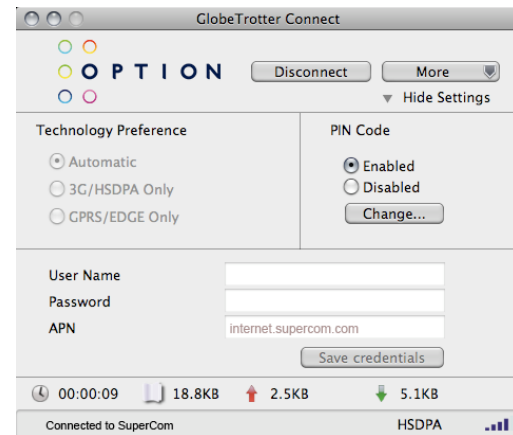
#### Windows® OS

Right click on the GlobeTrotter® Connect application icon in the system tool tray and click "Disconnect". Alternatively click on the "Disconnect" button in the GlobeTrotter® Connect window.



#### Mac OS®

Open the "Application" folder and run "GlobeTrotter Connect". In this tool, click the "Disconnect" button.



## 7 LED STATUS INDICATOR

The iCON® 505 is equipped with a single green LED, while the iCON® 505M has a multi-color LED . The different operating statuses are explained in the tables below.

iCON® 505:

State	RGB	Intensity in %	Pattern*	Interval in s
Power up	green	25	Blinks	1
Unregistered/scanning	green	25	Blinks	1
PIN required	green	25	Blinks	1
Loader mode	green	100	Continuous	
Firmware crash	green	100	Blinks	0.5
Registered 2G	green	25	Continuous	
Connected 2G	green	25	Double-Blink (DB)	DB in 1s – 3s off – repeat DB
Registered EDGE	green	25	Continuous	
Connected EDGE	green	25	Double-Blink (DB)	DB in 1s – 3s off – repeat DB
Registered 3G	green	50	Continuous	
Connected 3G	green	50	Triple-Blink (TB)	TB in 1s – 3s off – repeat TB
Registered HSDPA	green	50	Continuous	
Connected HSDPA	green	50	Triple-Blink (TB)	TB in 1s – 3s off – repeat TB

### ICON® 505M:

State	RGB	Intensity in %	Pattern*	Interval in s
Power up	red	25	Continuous	
Unregistered/scanning	red	25	Continuous	
PIN required	red	25	Continuous	
Loader mode	green	25	Continuous	
Firmware crash	Red/blue	100	Blinks	0.5
Registered 2G	green	100	2 short blinks	
Connected 2G	green	100	Continuous	
Registered EDGE	green	100	2 short blinks	
Connected EDGE	green	100	Continuous	
Registered 3G	blue	100	2 short blinks	
Connected 3G	blue	100	Continuous	
Registered HSDPA	blue	100	2 short blinks	
Connected HSDPA	blue	100	Continuous (cyan = 25% blue + 25% green)	



The device rendering here is shown only for illustration purposes.

## 8 SAFE REMOVAL

Before ejecting the ICON® 505/505M, always tell Windows® that you want to remove the card first. Use the "Safely Remove Hardware" icon in the system tray. If you do not do this, you may cause the system to crash.



## 9 TROUBLESHOOTING

If you are having trouble getting a reliable connection, please check with your network provider for advice on network coverage in your area.

Other characteristics such as network cell handover, dead coverage spots, geographic or structural obstructions, etc. may also affect the performance of the data transmission.

Symptom / possible causes	Possible solution
No LED burning.	Check if the device is firmly plugged into a USB port or check the connection of the cable if you are using this. If still not working, try to use another USB port.
No SIM inserted.	Disconnect the ICON® 505/505M. Insert the SIM and reconnect the ICON® 505/505M.
Insufficient signal strength.	Move the device to a location with better coverage (e.g. a window). The extension cable can be of help for this. Use the signal strength tool to see the signal strength.
SIM card was not present when connecting the device to a USB port.	Disconnect the device, insert the SIM and reconnect.
Drivers are not properly loaded. Device shows yellow exclamation marks in the PC's Device Manager window.	Close communication software that might be accessing the device. Close all ports before disconnecting the device from your computer. Reinsert the device.
LED is on continuously, but does not change to blinking after an attempt to connect.	The APN is not correct. Check the settings with the ones that you've obtained from your network operator.
You are roaming and the network you are using does not allow data links with your home operator.	Manually select another network that supports data links with your home operator.
Your connection software doesn't detect the device.	Probably due to faulty driver installation. Remove previously installed connection software. Also remove any other drivers of similar devices. Re-install the software.
Conflict with other programs.	Disable or remove any other communication program that might connect with the device.
Slow speed and/or no or weak UMTS/HSUPA network where you are.	Check in the communication software tool which settings are used ("UMTS preferred" is recommended) and also check which network is used (UMTS / HSUPA or GPRS / EDGE).

## 10 DETAILED TECHNICAL SPECIFICATIONS

### Specifications

#### HSUPA/HSDPA/UMTS Air Interface

- WCDMA 900/2100MHz (Rx Diversity)
- Release 6 compliant
- HSDPA Category 10 (14.4 Mbps\*)
- HSUPA Category 6
- Category 6 (5.76Mbps)
- UE Power Class 3

#### EDGE/GSM Air Interface

- 850/900/1800/1900MHz
- EDGE Power Class E2, GSM Power Class 1 at 1800/1900Mhz and Power Class 4 at 850/900Mhz
- Coding scheme UL and DL - CS 1-4, MCS 1-9
- Packet-switched data
- Multislot (E)GPRS Class 12, (E)GPRS Class B Type 1 MT
- Streaming, Background and Interactive
- QoS Classes Supported

### Terminal Equipment Interfaces

- Drivers: Windows® XP (Pro and Home), Windows Vista® 32/64bit, Mac OS® X and Linux
- SIM-ME interface as specified in 3GPP GSM TS11.11 and GSM 11.12 with compliance to ISO 7816
- SIM application toolkit support
- NDIS or Standard modem emulation for compatibility with terminal programs/dialers and for use with proprietary operating systems.
- AT Interface 3GPP TS27.005, ATD\*99# and ATD\*99\*\*<CID># support
- Multiple communication ports for simultaneous data call and network coverage reports

### Hardware Specifications

- CON® 505:single, green LED
- CON® 505M: single multi-color LED
- Supporting 1.8 and 3V UICCs
- SIM card interface compliant with 3GPP 31.101 and 31.102
- USB 2.0, backward compatible to USB 1.1
- 118MB of memory for operator applications and files

### Environmental

- Operating Temperature -10 to + 55° C
- RoHS compliant

### Approvals and Certifications

- All applicable regulatory approvals, Operator and Infrastructure IOT
- Microsoft WHQL certified drivers

### Current Dimensions (LxWxH)

- CON® 505 is 60.1\* x 28.1 x 16.6 mm; CON® 505M is 66.1\* x 28.1 \* 16.6 mm

\* inserted, 75.5 and 81.5 mm with cap and for 505 and 505M respectively

\*Cat10 (14.4 Mbps) DPA is planned for availability on units shipped as from Q4 2009. Until that time the device will be available as cat9 (10.2 Mbps) DPA.

## 11 PRODUCT SUPPORT AND ADDITIONAL HELP

GlobeTrotter® Connect 3.1 updates will be made available on the Option® support website.

### *11.1 Technical Support*

Questions and answers regarding GlobeTrotter® Connect 3.1 can be found on the Option® support website.

### *11.2 Help*

To access the Help file go to “Help” via the “More” button.

## APPENDIX A: LIMITED WARRANTY

**HARDWARE:** Option® warrants its products to be free from defects in workmanship and materials, under normal use and service, for one year. If a product does not operate as warranted during the applicable warranty period, Option® shall, at its option and expense, repair the defective product or part, deliver to Customer an equivalent product or part to replace the defective item. All products replaced will become property of Option®. Replacement products may be new or reconditioned. Option® shall not be responsible for any software, firmware, information or memory data of Customer contained in, stored on, or integrated with any products returned to Option® pursuant to any warranty.

**SOFTWARE:** Option® warrants that the software programs licensed from it will perform in substantial conformance to the program specifications therefore for a period of ninety (90) days from the date of purchase from Option® or its Authorized Reseller. Option® warrants the magnetic media containing software against failure during the warranty period. No updates are provided. Option®'s sole responsibility hereunder shall be (at Option®'s discretion) to replace any defective media with software, which substantially conforms to Option®'s applicable published specifications. Customer assumes responsibility for the selection of the appropriate applications program and associated reference materials. Option® makes no warranty that its products will work in combination with any hardware or applications software products provided by third parties, that the operation of the software products will be uninterrupted or error-free, or that all defects in the products will be corrected. For any third-party products listed in the Option® software product documentation or specifications as being compatible, Option® will make reasonable efforts to provide compatibility, except where the non-compatibility is caused by a "bug" or defect in the third party's product.

**STANDARD WARRANTY SERVICE:** Standard warranty service for hardware products may be obtained by delivering the defective product, accompanied by a copy of the dated proof of purchase, to Option®'s Corporate Service Center or to an Authorized Option® Reseller during the applicable warranty period. Standard warranty service for software products may be obtained by calling Option®'s Corporate Service Center or an Authorized Reseller, within the warranty period. Products returned to Option®'s Corporate Service Center must be pre-authorized by Option® with a Return Material Authorization (RMA) number marked on the outside of the package, and sent prepaid, insured, and packaged appropriately for safe shipment. The repaired or replaced item will be shipped to Customer, at his own expense, not later than thirty (30) days after receipt by Option®.

**WARRANTIES EXCLUSIVE:** If an Option® product does not operate as warranted above, customer's sole remedy shall be repair or replacement, at Option®'s option. The foregoing warranties and remedies are exclusive and are in lieu of all other warranties, express or implied, either in fact or by operation of law, statutory or otherwise, including warranties of merchantability and fitness for a particular purpose. Option® neither assumes nor authorizes any person to assume for it any other liability in connection with the sale, installation, maintenance or use of its products. Option® shall not be liable under this warranty if its testing and examination disclose that the alleged defect in the product does not exist or was caused by Customer's or any third person's misuse, neglect, improper installation or testing, unauthorized attempts to repair, or any other cause beyond the range of intended use, or by accident, fire or other hazard.

**LIMITATION OF LIABILITY:** In no event, whether based in contract or tort (including negligence) shall Option® be liable for incidental, consequential, indirect, special or punitive damages of any kind, or for loss of revenue, loss of business, or other financial loss arising out of or in connection with the sale, installation, maintenance, use, performance, failure, or interruption of its products, even if Option® or its Authorized Reseller has been advised of the possibility of such damages.

## APPENDIX B: HEALTH, SAFETY AND CERTIFICATION INFO

iCON® 505  
CE 0682  
FCC-ID NCMOGI0505

iCON® 505M  
CE 0682  
FCC NCMOGI1505

### **Your iCON® 505/505M is like a mobile phone**

Your iCON® 505/505M uses the same technology as a mobile phone. It is important that you always obey all safety regulations related to mobile phone use. If you have any doubt about the safe operation of your iCON® 505/505M you should remove the iCON® 505/505M from the PC and seek advice from authorized personnel. This device may not be connected to a USB hub, nor to a PC network, nor to a USB 1.0 interface.

### **Handle with care**

This device is designed to be plugged directly into the USB port of a computer, however, every precaution should be taken to avoid stress on the device should the computer be lifted, moved, relocated or packaged. Should regular movement of this nature be envisaged, an extender cable (sometimes supplied with the device) should be used so as to avoid damage to the device. It should be noted that any damage sustained as a result of the aforementioned mishandling will be regarded as "User Damage" and shall render the product warranty null and void.

### **1. Safety Measurements**

Please read the following guidelines carefully. Not following these guidelines can cause harm to the USB stick, yourself or other persons.

#### **1.1 General recommendations for use**

- Always treat your product with care and keep in a clean and dust-free place. Do not expose your product to open flames or lit tobacco products.
- Do not expose to liquid, moisture or humidity. Do not expose the iCON® 505/505M to rain or other liquids.
- Do not drop, throw or try to bend your product.
- Do not paint your product.
- Do not attempt to disassemble your product. Doing so may be dangerous and it will void the warranty.
- Do not touch the antenna unnecessarily. (This is located either inside the product or as an external antenna.)

**1.2 Traveling:** Handle the USB stick with care while traveling. It is recommended to remove the USB stick from the laptop.

**1.3 Ambient temperatures:** Do not expose the iCON® 505/505M or the antenna to ambient temperatures beyond the range of -10 and +55 degrees Celsius.

**1.4 Explosive atmosphere:** Turn off your PC in any area with a potentially explosive atmosphere. It is rare, but your PC could generate sparks, which could cause an explosion or fire. Areas with a potentially explosive atmosphere are not always clearly marked. They include fuelling areas (petrol filling stations), below deck on boats, fuel or chemical transfer or storage facilities, and areas where the air contains chemicals or particles, such as grain, dust, or metal powders. Do not transport or store your PC and accessories in the compartment of a vehicle which contains flammable gas, liquid or explosives.

**1.5 Blasting areas – construction sites:** Turn off your PC when in a blasting area in order to avoid interfering with two-way radios used in blasting operations.

**1.6 Do not use on aircraft:** Using a wireless devices on aircraft can cause interference and is illegal. Remove your iCON® 505/505M if you intend to use your PC whilst in an aircraft. Do not use it when the plane is on the ground without permission from the aircraft crew.

**1.7 Do not use in hospitals:** Please ensure you follow any local regulations or rules. People are often asked to switch off all electronic devices in some areas of a hospital. This is a recommendation that Option® fully supports. Using the iCON® 505/505M close to sensitive electronic devices could possibly result in interference. If you intend to use your PC in such areas, you must remove the iCON® 505/505M.

**1.8 Interference from radio signals:** Option® relies on advice from health authorities and relevant expert bodies about potentially undesirable reactions to radio emissions from the ICON® 505/505M.

**1.9 Immunity to interference:** Electromagnetic interference is the disturbance of the normal operation of a device due to its response to radio signals from an external source. Occasionally, in some situations you may hear short sounds coming from audio equipment such as radio or multimedia PC. However, these audible signals do not interfere with the operation of the equipment.

The Directive from the European Commission (2004/108/EC) governing all forms of electronic equipment concerns interference that such equipment produces, and its immunity to interference from outside. Any equipment compliant with that directive is unlikely to suffer interference. All wireless devices may get interference which could affect performance.

**1.10 Cardiac pacemakers, implanted defibrillators and other medical implant devices**

It is possible that the ICON® 505/505M may interfere with some types of pacemakers or implanted defibrillators when operated close to the implanted device. You should seek advice from your doctor that is specific to the implant before using the ICON® 505/505M. Health authorities in many countries have set up advisory services for medical devices and implants including providing advice about maintaining separation distance between the mobile device or other radio frequency equipment and the implant. Option® operating companies reflect the advice given by their relevant health authority or national advisory service, and as a minimum recommend a separation distance of at least 20cm between the ICON® 505/505M or other radio frequency terminal equipment and the embedded device.

**1.11 Hearing devices:** People with hearing aids or other cochlear implants may experience interfering noises when using mobile devices or when one is nearby. The level of interference will depend on the type of mobile device, the type of hearing device and the distance between the two. Increasing the distance between the ICON® 505/505M and hearing device may reduce interference.

**1.12 Children:** Do not allow children to play with your ICON® 505/505M. They could hurt themselves or others, or could accidentally damage the ICON® 505/505M. Your ICON® 505/505M contains small parts with sharp edges that may cause an injury or which could become detached and create a choking hazard.

**1.13 Driving:** Do NOT use the ICON® 505/505M while driving. Park the vehicle first.

**1.14 SIM cards:** To protect against damage from electrostatic discharge (ESD) do not touch the SIM card connectors. As a precaution, always make sure that the ICON® 505/505M is already in your hand before you insert or remove the SIM card.

**1.15 Accessories:** Only use Option® approved accessories. Do not connect with incompatible products. When used with accessories, Option® can only guarantee safe and correct operation of our products if the accessories are tested and approved by us.

**1.16 Safe distance:** The ICON® 505/505M has been thoroughly tested to comply with SAR requirements. These tests simulate the absorption by the human body of radiation from the ICON® 505/505M.

This device complies with the SAR regulation as stated by the FCC.

The measurements were made according to the Supplement C to OET Bulletin 65 of the Federal Communications Commission (FCC) Guidelines [OET 65] for evaluating compliance of mobile and portable devices with FCC limits for human exposure (general population) to radiofrequency emissions. The device was tested in all applicable USB orientations with a separation of 5mm to the flat phantom. The FCC guidelines define a limit of 1.2W/kg averaged over a mass of 1g for single platform devices, in this case a notebook platform.

This device complies with the SAR regulation as stated by the European Council Recommendation.

The SAR limit as defined by the European Council Recommendation is 2.0W/kg for a mass of 10g (European Council Recommendation 1999 519 EC), based upon ICNIRP guidelines. Details are available upon request. For day-to-day use we would advise the user to keep a minimum distance from the antenna of 20cm. Users concerned with the risk of Radio Frequency exposure may wish to limit the duration of their calls and to position the antenna as far away from the body as is practical.

## 2. Certification requirements

### 2.1 Federal communications commission notice

This equipment has been tested and found to comply with the limits for a Class B digital device, pursuant to Part 15 of the FCC Rules. These limits are designed to provide reasonable protection against harmful interference in a residential installation. This equipment generates uses and can radiate radio frequency energy and, if not installed and used in accordance with the instructions, may cause harmful interference to radio communications. However, we cannot guarantee that interference will not occur in a particular installation. If this equipment does cause harmful interference to radio or television reception, which can be determined by turning the equipment off and on, the user is encouraged to try to correct the interference by one or more of the following measures:

- Reorient or relocate the receiving antenna.
- Increase the separation between the equipment and receiver.
- Connect the equipment into an outlet on a circuit different from that to which the receiver is connected.
- Consult the dealer or an experienced radio or television technician for help.

### 2.2 Modifications

The FCC requires the user to be notified that any changes or modifications made to this device that are not expressly approved by Option®, could void the user's authority to operate the equipment.

This device complies with Part 15 of the FCC rules.

This device complies with Part 15 of the FCC rules. Operation is subject to the following two conditions:

- (1) This device may not cause harmful interference, and
- (2) This device must accept any interference received, including interference that may cause undesirable operation.

### 2.3 Exposure Information to Radio Frequency Energy

This USB 2.0 device has been tested in a notebook for compliance with the SAR requirements as stated by the FCC. Users concerned with the risk of Radio Frequency exposure may wish to limit the duration of their calls and to position the antenna as far away from the body as is practical.

The USB Stick has been tested with specific integral antenna for SAR compliance with one notebook having vertical and horizontal USB slots with a separation distance of 5mm between the panthom and the device. The device can be used in notebook computers with substantially similar physical dimensions, construction, and electrical and RF characteristics.

### 2.4 Manufacturer's disclaimer statement

The information in this document is subject to change without notice and does not represent a commitment on the part of the vendor. No warranty or representation, either expressed or implied, is made with respect to the quality, accuracy or fitness for any particular purpose of this document. The manufacturer reserves the right to make changes to the content of this document and/or the products associated with it at any time without obligation to notify any person or organization of such changes. In no event will the manufacturer be liable for direct, indirect, special, incidental or consequential damages arising out of the use or inability to use this product or documentation, even if advised of the possibility of such damages.

### 2.5 System requirements

- USB 2.0 slot.
- Must be supplied by a SELV (Safety Extra Low Voltage) circuit with limited power.

### 2.6 Electrostatic discharges (only for iCON® 505M)

Electrostatic discharges shall be applied to all exposed surfaces of the EUT except where the user documentation specially indicates a requirement for appropriate protective measures.

### 2.7 USB extension cable limitations

Please note that the iCON® 505/505M is designed for a direct connection to the PC. Option declines any responsibility for malfunctioning of the device if used with a USB-cable.

For questions regarding your product or FCC declaration, contact:

Option | Gaston Geenslaan 14 | 3001 Leuven | Belgium | [www.option.com](http://www.option.com)

To identify this product we refer to the Part, Series or Model number found on the product.



